

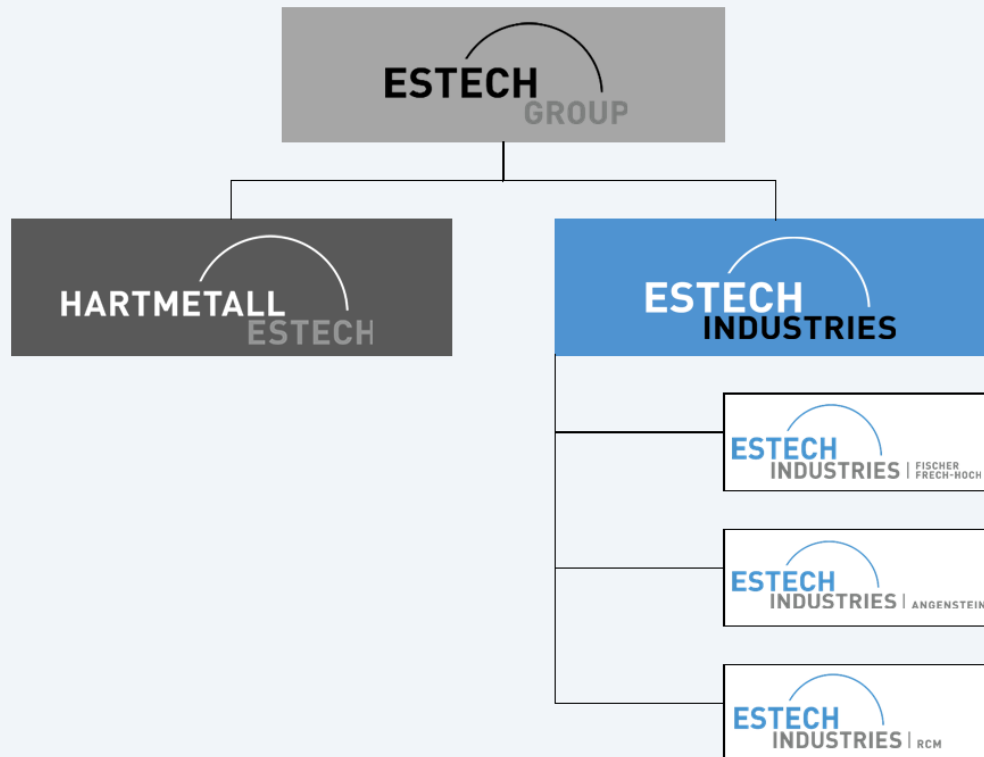
# PASSION FOR METAL

# ESTECH Industries

A part of ESTECH Group AG

**Swiss Power Carbide**  
Sophisticated carbide solutions for the international market.

20 Mio. CHF revenue  
80 Employees



**Industrial supply**  
Customized solutions from prototypes to series production.

25 Mio. CHF Revenue  
130 Employees

# ESTECH Industries

Passion for Metal

## THE GROUP



### ESTECH INDUSTRIES

Meisterschwanden AG

Concentration of skills and many years of experience  
One supplier for everything



## THE COMPLETE

### RCM ESTECH

Burgdorf BE

High-performance machining and sub-assembly production with a large vertical range of manufacture



### ESTECH INDUSTRIES ANGENSTEIN

Aesch BL

Welding and machining of large, stainless parts incl. global procurement



### ESTECH INDUSTRIES FISCHER FRECH-HOCH

Meisterschwanden AG

Laser cutting, punching, welding of (stainless) steel or aluminum up to assemblies



## THE BIG

## THE CONSTRUCTIVE

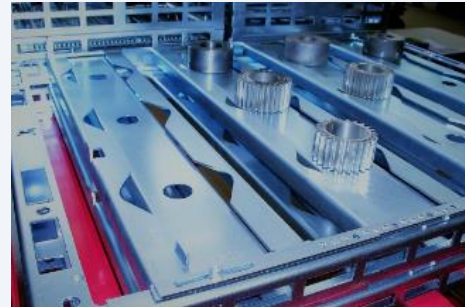


# ESTECH Industries

## ESTECH Industries: The Group

The competence center for component assembly

- Everything from a single source
- Trading partner
- Development partner
- Fulfillment of high demands according to various industry standards

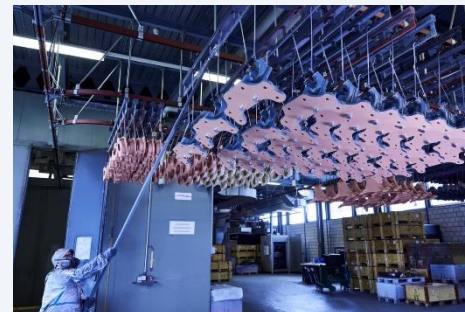


# ESTECH Industries

## RCM: The Complete

The competence center for mechanical engineering

- High-performance CNC machining (cubic & rotary)
- Automated production with palletizing systems
- Wet painting / gear cutting (external)
- Assembly of ready-to-install assemblies

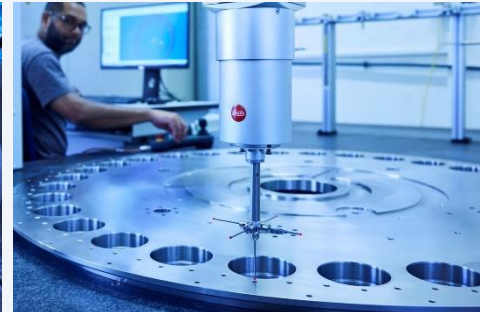


# ESTECH Industries

## Angenstein: The Big

The competence center for medium to large-scale machining

- CNC turning vertical and horizontal
- CNC milling/turning combined / CNC 5-axis machining
- Certified welding technology in accordance with PED 2014/68/EU
- Machining of stainless steel and special materials



# ESTECH Industries

Fischer Frech-Hoch: The Constructive

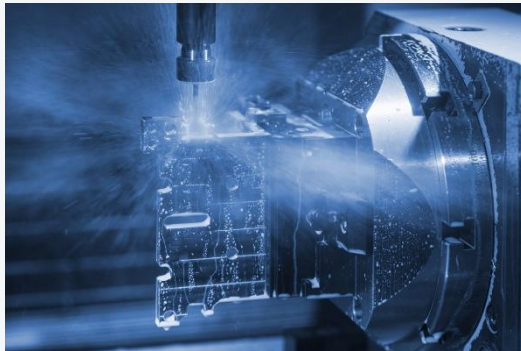
The competence center for sheet metal processing

- Construction CNC lasering & punching, bending, forming
- Certified welding technology: EN15085-2 CL1 / EN1090-2
- Assemblies and complete systems



# ESTECH Industries

Competencies: The entire spectrum of metalworking



**Cubic and rotary  
CNC machining**



**Sheet metal processing: lasering,  
bending, joining**



**Certified welding technology:  
automated and manual**



**Surface finishing: painting,  
coating, and much more.**



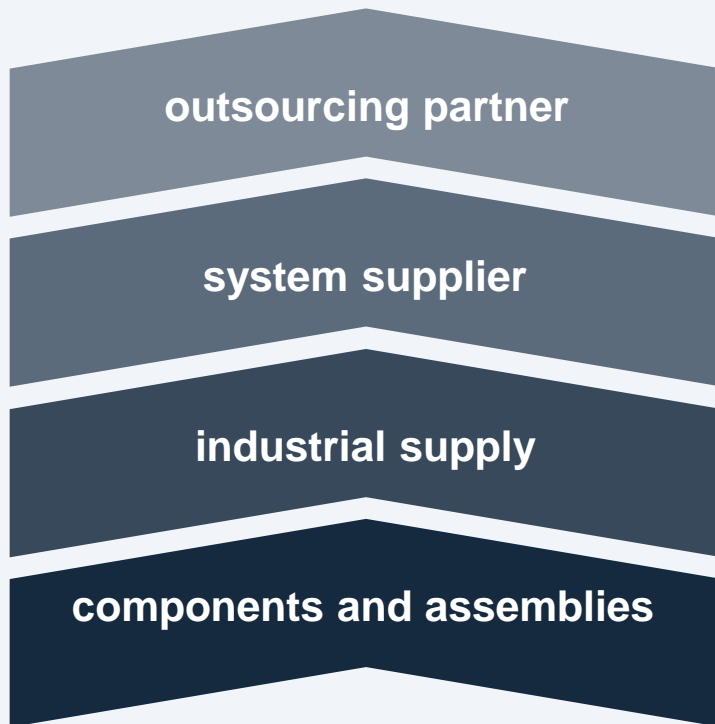
**measure - check – clean**



**Assemblies and systems**

# ESTECH Industries

Full-service partner across all stages of the value chain



- **outsourcing partner:**  
Long-term takeover of a complete production line including infrastructure
- **system supplier:** Production responsibility for a specific assembly or family of parts
- **industrial supply:**  
ONE-STOP service across the entire value chain
- **components and assemblies:**  
B2B - contract manufacturing

# ESTECH Industries

Global Sourcing – international supplier network



forged and cast blank



semi-finished products



special flanges, rings



precision parts



# ESTECH Industries

## Certifications

### ISO 9001:2015

Specific manufacturer approvals for quality requirements for rolling stock (Fischer Frech-Hoch) and for pressure equipment (Angenstein)

Certified management system in all companies'

Environmental management – **ISO 14001**

Workplace health and safety – **EKAS**

### DGRL 2014/68/EU EN 15085 (CL1)

Comprehensive quality requirements in welding technology. Qualified welding processes, specialized personnel – **EN ISO 15614-1** – **ASME IX** – **AD2000** – **EN 287-1** and much more

### ISO 3834

# ESTECH Industries

Solutions for different industries



Automation and drive technology



Machine and tool construction



Precision instruments



Defense, aerospace



Process industry: fittings, pumps & valves



Rolling stock



Energy and environmental technology



Food, medical and laboratory technology

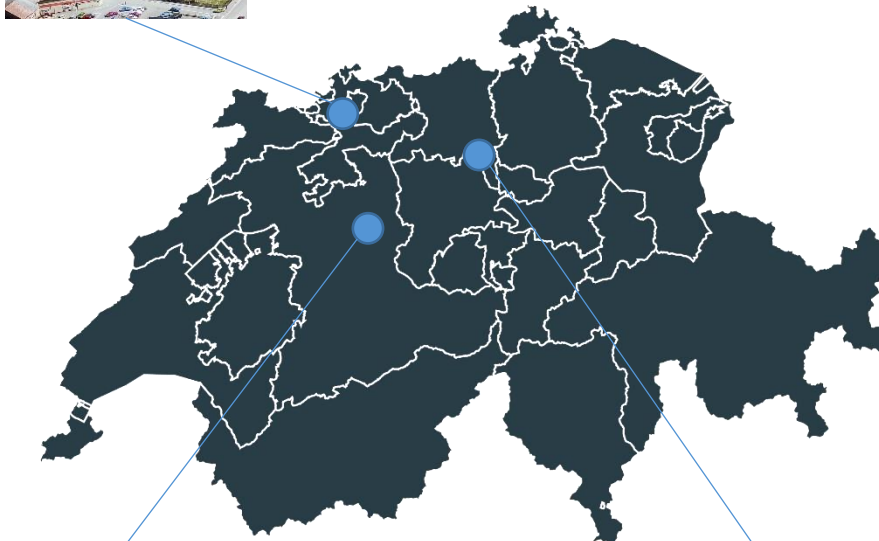


Municipal technologies

# ESTECH Industries

Your sales contact

**ESTECH INDUSTRIES  
ANGENSTEIN AG**



**RCM ESTECH AG**



**ESTECH INDUSTRIES AG  
FISCHER FRECH-HOCH**



**Oscar Ortiz**  
**ESTECH INDUSTRIES AG**  
**ANGENSTEIN & RCM**  
+41 79 356 13 30  
[oscar.ortiz@estech.ch](mailto:oscar.ortiz@estech.ch)



**Arber Binaki**  
**ESTECH INDUSTRIES AG**  
**FISCHER FRECH-HOCH**  
+41 76 421 51 68  
[arber.binaki@estech.ch](mailto:arber.binaki@estech.ch)



**Pascal Sequin**  
**ESTECH INDUSTRIES AG**  
**ROMANDIE**  
+41 61 756 1141  
[pascal.sequin@estech.ch](mailto:pascal.sequin@estech.ch)

THANK YOU